

SAFETY HINGE SWITCH SHS3

601.9390.022

SHS3-U15Z-KA 5

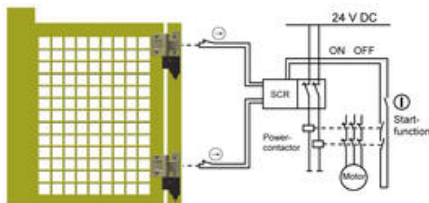
- Highly reliable, extremely difficult to bypass
- Contacts: default 2 NC+1 NO or 2 NC
- Point of fixation 0-270°



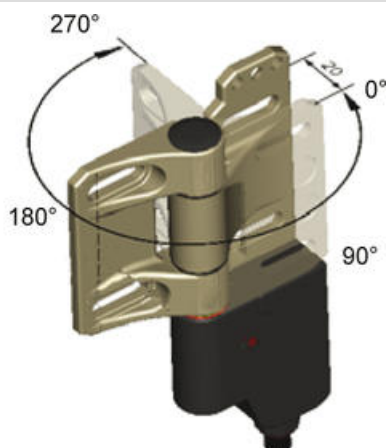
PRODUCT DESCRIPTION

With the SHS3 safety hinge switch Bernstein presents the logical further development of the SHS series and a solution that makes it unnecessary to replace the safety hinge switch when equipment such as safety gates are damaged as the result of mechanical stress, such as after being bumped by a forklift truck for instance. Even after the switching point has been set, if need be, the user can now correct the hinge setting with the aid of the integrated fine adjustment system. The SHS3 hinge switch is reusable even when the entire system needs to be converted: With the aid of a change kit, the user can redefine the switching point without using the high protection rating of IP67 / IP69 K.

Coupling example

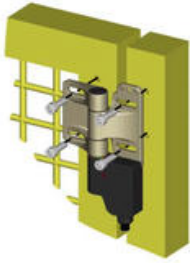


Swivel range 0-270°



INSTALLATION

Configuration 1

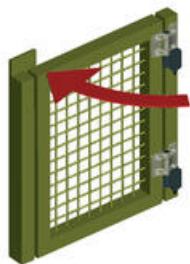


Configuration 2

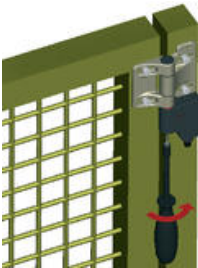


The hinge can also be installed between the door and the frame, in which case the hinge is mechanically protected. Installation width 20 mm, safety distance 120 mm.

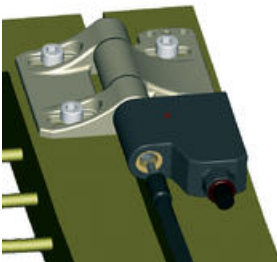
Point of fixation setup



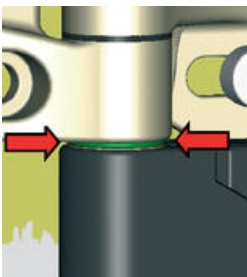
1. Install the hinge



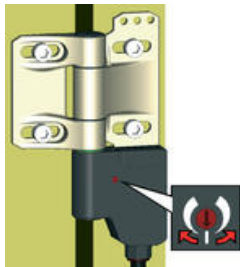
2. Select suitable point of fixation
0-270° (door is closed in starting position).



3. Tighten the special bolt located in the switch unit. Special torx head required for the setup is included in the delivery.



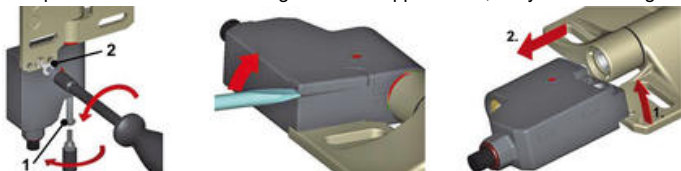
4. The bolt is tightened until the red indication disk between the hinge and switch unit is replaced with a green indication disk. Secure with extra 2 Nm (+10 %). Safety hinge is now operational and the contacts open while the door is opened.



5. Fine adjustment screw is located in top of the switch unit.

MOUNTING

Compatible with both left- and right-handed applications, easy to interchange.



SPECIFICATIONS

Cable length	5000 mm
Contact type	1NO, 2 NC
IP Class	IP67
Material of body	Stainless steel
Port position	Down
Temperature range from	-25 °C
Temperature range to	70 °C

